

George & Dora Baer

George E. Baer

Born: 1869 Michigan
Father & Mother's Birth Place: Michigan

Dora Baer

Born: 1860 Oregon
Father's Birth Place: MO, or England
Mother's Birth Place: MO, or KY

1900 Census. Santa Rosa Precinct, Sonoma, CA

A. J. James	Head	CA	1865	35 yrs
Hattie James	Wife	OR	1870	30 yrs
Emma James	Dau	CA	1891	9 yrs
Laura James	Dau	CA	1893	7 yrs
George Baer	Boarder	MI	1869	30 yrs
Dora Baer	Boarder	ID	1860	39 yrs
Pearl Baer	Boarder	CA	1897	3 yrs

In 1900 George Baer's occupation was electrical engineer.

In 1900 George Baer's occupation was electrical engineer.

1. Bureau of Land Management (BLM), General Land Office (GLO) Records. 2007. Official Federal Land Records Site Internet.

2. Hugo Neighborhood. 2007. *Hugo Pioneers*. Map Of Federal Land Transfer in Hugo, Oregon. Hugo, OR.

3. Metsher, Chas. F. 1932 *Metsker Map. Josephine County, Oregon*. Portland, OR.

4. Oregon Death Index, 1903-98.

5. Walker, Mike. February 12, 2008. *Wayne & Janet Mcky and DeLoss and Jeanette Downes Interview about Hugo Settlers*. Hugo, OR.

The George Baer Family: Federal Census

1910 Census. Merlin Precinct, Josephine Co., OR

George Baer	Head	MI	1868	42 yrs
Dora Baer	Boarder	ID	1861	49 yrs
Pearl Baer	Daugh	CA	1897	13 yrs
Laura Overton	Sister-in-law	OR	1875	35 yrs

In 1910 George Baer was a farmer practicing general farming.

1911 Mrs. Laura Overton and daughter, of San Francisco, are visiting with Mrs. George Baer, a sister of Mrs. Overton. *Rogue River Courier*. June 16, 1911. Three Pines.

1920 Census. Glendale Precinct, Douglas County, Oregon

George E. Baer	Head	MI	1868	52 yrs
Dora Baer	Wife	OR	1862	58 yrs

In 1920 George's occupation was laborer in a saw mill.

Wine grapes - Grapes for wine went away during prohibition from 1920 to 1933, during which time alcohol sale, manufacture and transportation were banned throughout the United States as mandated in the Eighteenth Amendment to the United States Constitution.

1926 George Baer's Hugo Homestead On July 8, 1912 George E. Baer was issued a homestead certificate for 160 acres in Hugo, Oregon (Patent No. 04180).¹⁻² This acreage is adjacent and to the north of the Three Pines Fruit Tracts and north of the Town of Three Pines, Oregon.

Homesteader: ca., 1910 - 1945

1930 Census. Lucky Queen Precinct, JO Co., OR

George E. Baer	Head	MI	1868	62 yrs
Dora Baer	Wife	OR	1860	70 yrs

In 1930 George Baer's occupation was a farmer specializing in vineyards.



1932 George Baer owned 80 acres of his homestead in 1932.³ The other two 40s were owned by B. C. Oburn (Osborne) and Chas. D. Hayes.

1940s In the early 1940s Wayne McKy was over at the Baer place one time with his dad, Glen McKy. The two men were good friends. Baer had a grape vineyard. Wayne has his receipt container (organizer). It is a wooded set of small shelves about three feet long. His original old style house is presently owned by David Riley.⁵

In 1930 George Baer's occupation was a farmer specializing in vineyards.

1943 - 45 George E. Baer passed March 16, 1943 in Josephine County, Oregon. Dora Baer passed July 6, 1945 in Josephine County, Oregon.⁴ They are both buried in Hillcrest Memorial Gardens.

Want more information? Contact an officer of the *Hugo Neighborhood* on how you can become involved in your community's history and land use.

Hugo Neighborhood Association & Historical Society's Mission

This information brochure is one of a series of documents published by the Hugo Neighborhood Association & Historical Society (*Hugo Neighborhood*). It is designed to be shared with neighbors for the purpose of helping protect our rural quality of life by promoting an informed citizenry in decision-making. The *Hugo Neighborhood* is an informal nonprofit charitable and educational organization with a land use and history mission of promoting the social welfare of its neighbors.

Land Use & History

The *Hugo Neighborhood's* land use mission is to promote Oregon Statewide Goal 1 — Citizen Involvement, and to preserve, protect, and enhance the livability and economic viability of its farms, forests, and rural neighbors. It will act, if requested, as a technical resource assisting neighbors to represent themselves.

Its history mission is to educate, collect, preserve, interpret, and research its local history and to encourage public interest in the history of the Hugo area.

Volunteer membership dues are \$10.00 annually per family and normally used for paper, ink, envelopes, publications and mailings. Send us your e-mail address if you want to know what we are doing.

Email: hugo@jeffnet.org

Web Page: <http://www.hugoneighborhood.org/>

Edited by Jean Boling, Jacque Hardwick, Karen Rose,
Wayne & Janet McKy, & Mike Walker

HNA&HS Officers

Wayne McKy, Chair
6497 Hugo Road
Grants Pass, Oregon 97526

Mike Walker, Education Chair
3388B Merlin Rd #195
Grants Pass, Oregon 97526

Web Master

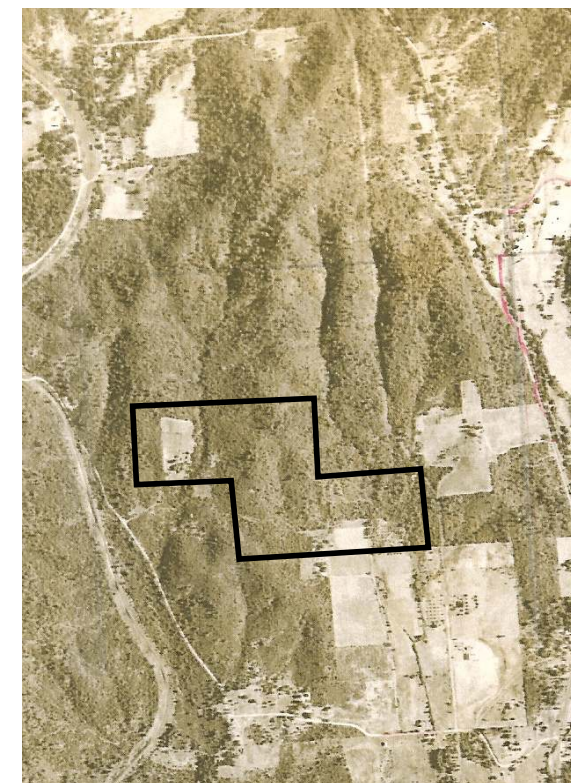
Karen Rose, Web Master
575 Red Mountain Drive
Grants Pass, Oregon 97526

Josephine County Historical Society

Jean Boling, Historic Sites Chair
214 NW Booth Street
Grants Pass, Oregon 97526

GEORGE BAER FAMILY: FEDERAL CENSUS

Brochure 13 Of Hugo's Early
Settler Brochure Series



George Baer's Old Hugo Homestead: 1940

April 14, 2009
Updated August 27, 2011

**Hugo Neighborhood Association &
Historical Society**
Josephine County Historical Society