
Insulators: Windows To History

Hugo Insulators In 2006 the *Hugo Neighborhood* started its history research on insulators for telegraph, postal telegraph, railroad, long-distance and local telephone, and power lines with the donations of four insulators from Howard Banks, Norbert Tieman, and Mike Walker.¹⁻² In 2010 Claude Dunivin donated a CD 147.



Insulators L to R: CD 154, CD 126,
CD 133, & CD 145

CD 154 Hemingray/Hemingway No. 42. AT&T built long telephone distance lines through Josephine County (JO CO) in the 1920s. Service continued until the mid to late 1950's when the lines were replaced with buried cable. AT&T replaced the old Hemingray Number 40, widely used from its introduction in 1910, with the Hemingray No. 42. In 2006 Mike Walker found two Hemingway No. 42 insulators in Rat Creek within the I-5 right-of-way (ROW).

1. CD 126/O & C Railroad Brookfield Blob Top - Donated by Howard Banks; CD 147 Spiral Groove" Brookfield - Donated by Claude Dunivin CD 133 & CD 145 Brookfields - Donated by Norbert Tieman; and 2 CD 154s/Hemingray No. 42s - Donated by Mike Walker.

2. Hugo Neighborhood. March 28, 2006. *First Insulators of Hugo Neighborhood*. Hugo, OR.

3. Hugo Neighborhood. March 19, 2006. *Crown Jewels of the Wire*. Hugo, OR.

Poles, Cross-Arms, Pins, & Insulators

CD 126/Brookfield Blob Top The original insulators from the Oregon & California (O & C) Railroad were CD 126 & CD 127 Brookfield "blob tops".² The O & C Railroad was completed to Roseburg from Portland, Oregon in 1872 and to Grants Pass in 1883.

CD 133 Brookfield and CD 145 Brookfield These two brookfield insulators are associated with the Postal Telegraph Company, a new telegraph company created in 1881 to compete with Western Union. It was built through JO CO ca., 1886 - 1887.

CD 147 Brookfield Barclay Patent

This style was made to allow the insulator to be replaced without untwisting the tie wire. Nicknamed the "Spiral Groove" because of the unique spiral-shaped wire groove patented on October 8, 1907. It was found by Claude Dunivin on Hugo's Southern Pacific Railroad communications line in 1978.



CD 147



An **Insulator Pin** is a round piece of wood with one end that is designed to fit in the pinhole of an insulator and the other end designed to fit in a hole in a cross-arm. Early wood pins were made out of oak or locust, and later pins were made of wood/metal or all metal components.

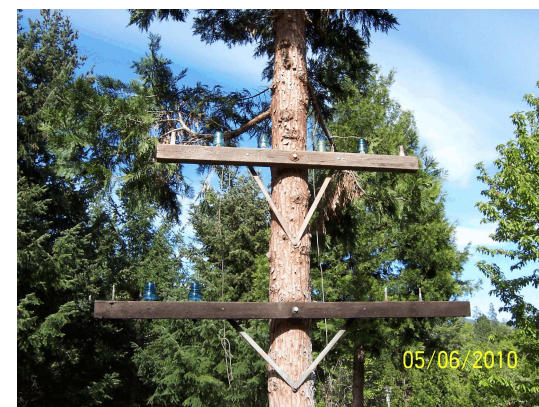


Insulator Brochure Series This brochure is number fourteen in the "insulator" series.³

Wooden & Wood & Metal Cross-Arm Insulator Pins

The **Hugo Neighborhood's Insulator Display** is located on the property of Cindy and Mike Walker. It is made up of a pole (i.e., incense cedar tree), 2 cross arms, 4 galvanized iron braces, 4 carriage bolts, 2 lag screws, 6 wooden cross-arm insulator pins, 8 wood and metal cross-arm insulator pins, and 6 insulators. It was developed the Spring of 2010 by Hugo neighbors Tom Walker, Tom Chabot, and Mike Walker.

Hugo's Two Horizontal Cross-arms The upper Postal Telegraph Company Cross Arm (6' long x 3" x 4") was found in 2007 by Mike Walker on Mt. Sexton at Windy Gap. It is a 6 hole insulator cross arm for wooden insulator pins. It is imprinted with the words, *Portland, OR 54*. The lower Cross Arm (8' long x 3" x 4") was found on the ground abandoned in a pile of debris in 2009 by Mike in the railroad ROW above Pearce Riffle. This creosoted cross arm has 8 holes for wood and metal insulator pins. They have a threaded wooden head where the insulator screws on and a metal pin which bolts onto the cross-arm.



Hugo Neighborhood Association & Historical Society's Mission

This information brochure is one of a series of documents published by the Hugo Neighborhood Association & Historical Society (*Hugo Neighborhood*). It is designed to be shared with neighbors for the purpose of helping protect our rural quality of life by promoting an informed citizenry in decision-making. The *Hugo Neighborhood* is an informal nonprofit charitable and educational organization with a land use and history mission promoting the social welfare of its neighbors.

Land Use & History

The *Hugo Neighborhood's* land use mission is to promote Oregon Statewide Goal 1 — Citizen Involvement, and by preserving, protecting, and enhancing the livability and economic viability of its farms, forests, and rural neighbors. It will act, as requested, as a technical resource assisting neighbors to represent themselves.

Its history mission is to collect, preserve, interpret, and research its local history and to encourage public interest in the history of the Hugo area.

Membership dues are \$10.00 annually and due in January. They are used for paper, ink, envelopes, publications, and mailings. Make checks to the *Hugo Neighborhood* and send them to our Treasurer.

Email: hugo@jeffnet.org
Web Page: <http://jeffnet.org/~hugo/>

Edited by Jacque Hardwick & Mike Walker

Hugo Neighborhood Officers

Hal Anthony, Outreach Chair
3995 Russell Road
Grants Pass, Oregon 97526

Wayne McKy, Chair
6497 Hugo Road
Grants Pass, Oregon 97526

Mike Walker, Education Chair
3388B Merlin Rd #195
Grants Pass, Oregon 97526

Standing Committees

Historical Documents Editing Committee
Jacque Hardwick, Chair; Jean Boling, Karen Rose;
Wayne & Janet McKy; Mike Walker

Jean Boling, Chair, Pleasant Valley Cemetery Committee;
Co-Chair, Pioneers Committee

Mike Brassill, Chair, Wildflower Committee

Wayne McKy, Co-Chair, Hazardous Fuels Committee;
Chair, Orchard Committee;
Chair, Farm & Forest Committee

Karen Rose, Web Master; News Letter Editor
Hugo Whistle Stop; Co-Chair, Hugo Emigrant Trails
Committee; Chair, Native Americans Committee

Jon Whalen, Story Teller; Chair
Metal Detection Committee

Mike Walker, Co-Chair, Hugo Emigrant Trails Committee;
Co-Chair, Hazardous Fuels Committee;
Chair, National Historic Register Committee;
Co-Chair, Pioneers Committee

Tom Walker, Chair, Hugo Sign Committee

Brochure 14 in Insulator Series: HNA & HS 2010 - 4
C:\Documents and Settings\mike\My
Documents\Genealogy\History_Brochures\Insulators\BROCHURE_14_Hugo Insulator
Display_050710.wpd

Hugo Neighborhood's Insulator Display



Brochure 14 in Insulator Series



May 7, 2010

by

Hugo Neighborhood Association &
Historical Society