
Hugo's Early Settlers

For purposes of the Hugo's Settler brochure series, an early Hugo settler includes anyone who lived, worked, or owned property there sometime from 1900 through the 1930s.

H. M. Horton

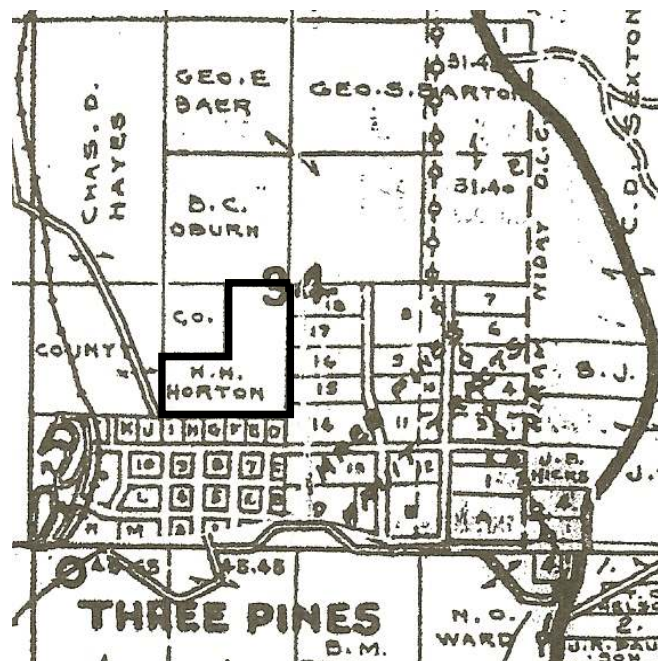
Born:
Birth Place:
Father's Birth Place:
Mother's Birth Place:

??

Born:
Birth Place:
Father's Birth Place:
Mother's Birth Place:

[Simple ancestry search for Josephine County, Oregon 1930.](#) 1/24/08

The H. M. Horton Family, Hugo Settlers: 19?? - 19??



H. M. Horton's Three Pines Tract: 1932

Three Pines, Oregon

1932 By 1932 H. M. Horton was in possession of approximately 30 acres in Three Pines, Oregon.¹

Want more information? Contact an officer of the *Hugo Neighborhood* on how you can become involved in your community's history and land use.

1. Metsher, Chas. F. 1932 *Metsker Map. Josephine County, Oregon.* Portland, OR.

Hugo Neighborhood Association & Historical Society's Mission

This information brochure is one of a series of documents published by the Hugo Neighborhood Association & Historical Society (*Hugo Neighborhood*). It is designed to be shared with neighbors for the purpose of helping protect our rural quality of life by promoting an informed citizenry in decision-making. The *Hugo Neighborhood* is an informal nonprofit charitable and educational organization with a land use and history mission of promoting the social welfare of its neighbors.

Land Use & History

The *Hugo Neighborhood's* land use mission is to promote Oregon Statewide Goal 1 — Citizen Involvement, and to preserve, protect, and enhance the livability and economic viability of its farms, forests, and rural neighbors. It will act, if requested, as a technical resource assisting neighbors to represent themselves.

Its history mission is to educate, collect, preserve, interpret, and research its local history and to encourage public interest in the history of the Hugo area.

Volunteer membership dues are \$10.00 annually per family and normally used for paper, ink, envelopes, publications and mailings. Send us your e-mail address if you want to know what we are doing.

Email: hugo@jeffnet.org
Web Page: <http://jeffnet.org/~hugo/>
Edited by Karen Rose, Wayne McKy, & Mike Walker

HNA&HS Officers

Hal Anthony, Outreach Chair
3995 Russell Road
Grants Pass, Oregon 97526

Wayne McKy, Chair
6497 Hugo Road
Grants Pass, Oregon 97526

Mike Walker, Education Chair
3388B Merlin Rd #195
Grants Pass, Oregon 97526

Karen Rose, Web Master
575 Red Mountain Drive
Grants Pass, Oregon 97526

Not Quality Controlled, Nor Edited

H. M. HORTON FAMILY: HUGO SETTLERS



Very Draft
Brochure 176 Of Hugo's Early
Settler Brochure Series



January 25, 2008

**Hugo Neighborhood Association &
Historical Society**