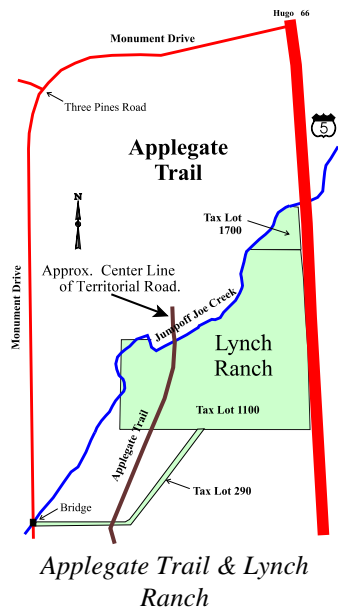


## Crippin Family

**Applegate Trail** The 1846 Applegate Trail bisects Hugo's Lynch Ranch (ca., 1968/1971 - 2005). It was the earliest wagon road in the county and in 1855 it was part of Augustus L. Walker's donation land claim (DLC). It is identified on 2007 Josephine County Assessor maps as the "Approx. Center Line Territorial Road Willamette to Jacksonville."



**1924** Clarence Ray Von Kolkow was born November 24, 1924 at his folks' residence that became known as the Oxyoke Service Station in northern Josephine County. He would also attend Three Pines School. He started first grade in 1930.<sup>1</sup> He remembered the *Crippin's Trail* through the Hansen Ranch (i.e., 1930 - 1945) and over Jumpoff Joe Creek on the log bridge.

## Crippin Trail

**Crippin's Trail** *The Crippins lived over at the foot of Red Mountain [east of today's I-5] in a log house with a dirt floor. They raised goats. Mr. Crippin worked for the WPA during the depression (i.e., a road gang at the time).<sup>2</sup> The Works Progress Administration (later WOR Projects Administration; WPA) was the largest New Deal agency, employing millions of people and affecting most every locality, especially rural and western mountain populations.*

*"The old log bridge over Jumpoff Joe Creek was a foot bridge. It was a good sized log chipped off on at the top with no hand railing."*

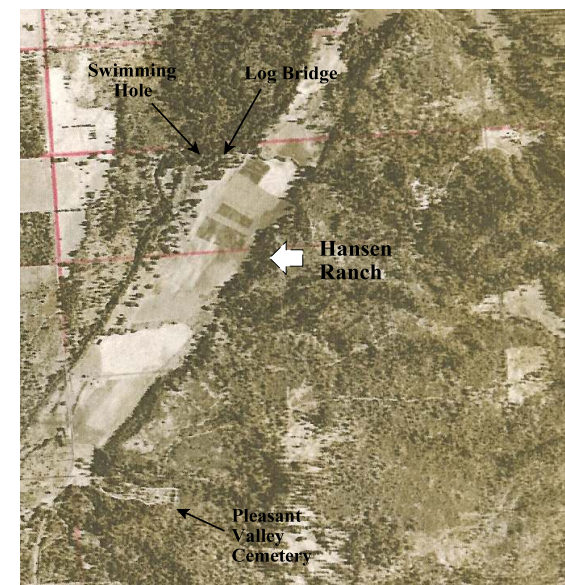
*The oldest Crippin boy was Charles, and then there was June, next Chester, and Alice was the youngest. Charles was my [Clarence's] buddy. In the early 1930s three of the Crippin kids were going to the Three Pines School when I was going. They walked to Three Pines School across the old log bridge over Jumpoff Joe Creek.<sup>2</sup>*

*The old log bridge over Jumpoff Joe Creek was a foot bridge. It was a good sized log chipped off on at the top with no hand railing.<sup>2</sup>*

1. Hugo Neighborhood. 2001. *Clarence and Bernice (Brazille) Kolkow's Memories: 1924 - 2001*. Hugo, OR.  
2. Hugo Neighborhood. November 10, 2007. *History of the Three Pines/Hugo Region*. Clarence Kolkow Interview. Hugo, OR.  
3. Hugo Neighborhood. 2006. *Vernon Chester Ludwick's Three Pines & Hugo Memories: 1923 - 1941*. Hugo, OR.  
4. Rogue River & Siskiyou National Forest. 1939 & 1940. Project F.S. 6-66. Aerial Photography. Designating Symbol GIZ. Approximate Scale: 1:20,000. USDA, Forest Service, North Pacific Region.

## Log Foot Bridge

**Log Foot Bridge** The bridge's location had a reason. It was the evolution, in the same area, of the Applegate Trail which had originally crossed Jumpoff Joe Creek there, just upstream from the old swimming hole. It is identified on a Josephine County Assessor map as the "Approx. Center Line Territorial Road Willamette to Jacksonville."



**C. T. Hansen Ranch: 1940**

For 150 years what started out as prairie has been farm land since Augustus Walker's DLC, and is today zoned "Exclusive Farm". C. T. Hansen was farming the fields of this land in the 1930 and 1940s.<sup>3</sup>

5. USGS. 1998. *Merlin Quadrangle*. 7.5 minute topographic series is base for topo maps.

## Hugo Neighborhood Association & Historical Society's Mission

This information brochure is one of a series of documents published by the Hugo Neighborhood Association & Historical Society (*Hugo Neighborhood*). It is designed to be shared with neighbors for the purpose of helping protect our rural quality of life by promoting an informed citizenry in decision-making. The *Hugo Neighborhood* is an informal nonprofit charitable and educational organization with a land use and history mission of promoting the social welfare of its neighbors.

### Land Use & History

The *Hugo Neighborhood's* land use mission is to promote Oregon Statewide Goal 1 — Citizen Involvement, and to preserve, protect, and enhance the livability and economic viability of its farms, forests, and rural neighbors. It will act, if requested, as a technical resource assisting neighbors to represent themselves.

Its history mission is to educate, collect, preserve, interpret, and research its local history and to encourage public interest in the history of the Hugo area.

Volunteer membership dues are \$10.00 annually per family and normally used for paper, ink, envelopes, publications and mailings. Send us your e-mail address if you want to know what we are doing.

Email: [hugo@jeffnet.org](mailto:hugo@jeffnet.org)

Web Page: <http://www.hugoneighborhood.org/>

Edited by Karen Rose, Wayne McKy, & Mike Walker

### HNA&HS Officers

Hal Anthony, Outreach Chair  
3995 Russell Road  
Grants Pass, Oregon 97526

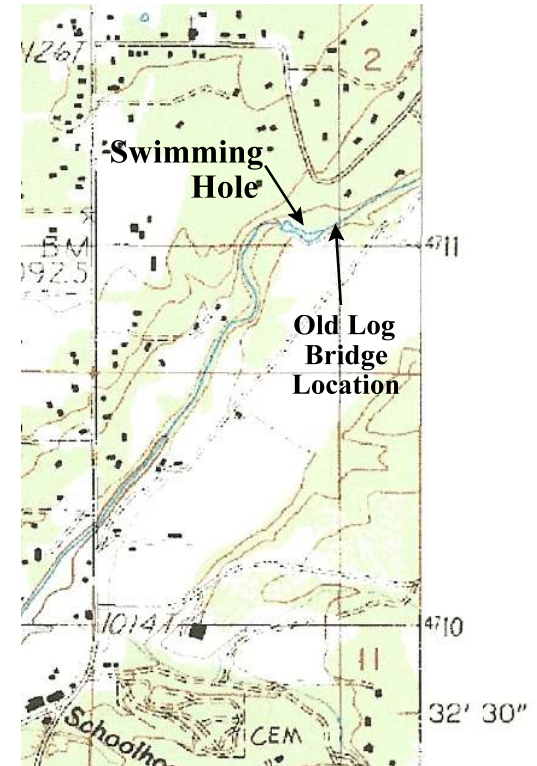
Wayne McKy, Chair  
6497 Hugo Road  
Grants Pass, Oregon 97526

Mike Walker, Education Chair  
3388B Merlin Rd #195  
Grants Pass, Oregon 97526

Karen Rose, Web Master  
575 Red Mountain Drive  
Grants Pass, Oregon 97526

## HUGO'S CRIPPIN TRAIL

Brochure 1B Of Hugo's Trails  
Brochure Series



*Jumpoff Joe Swimming Hole: 1998*

November 23, 2007

**Hugo Neighborhood Association & Historical Society**