

Hugo's Early Settlers

For purposes of the Hugo's Settler brochure series, an early Hugo settler includes anyone who lived, worked, or owned property there sometime from 1900 through the 1930s.

August Lindblum

Born:
Birth Place:
Father's Birth Place:
Mother's Birth Place:

??

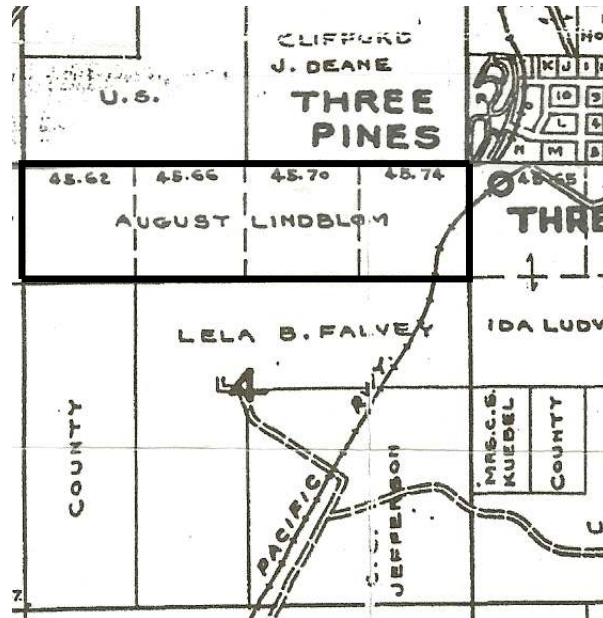
Born:
Birth Place:
Father's Birth Place:
Mother's Birth Place:

Ancestry search for August Lindblum in Josephine County, Oregon 1930. 40 records. 02/15/08

Two August Lindblums:

52 year old from California
55 year old from Illinois

The August Lindblum Family, Hugo Settlers: ca., 19?? - 19??



August Lindblum's Hugo Tract: 1932

??

1932 In 1932 August Lindblum was in possession of the old 1910 George Woodworth 160 acre homestead.¹

Want more information? Contact an officer of the *Hugo Neighborhood* on how you can become involved in your community's history and land use.

1. Metsker, Chas. F. 1932 *Metsker Map. Josephine County, Oregon*. Portland, OR.

Hugo Neighborhood Association & Historical Society's Mission

This information brochure is one of a series of documents published by the Hugo Neighborhood Association & Historical Society (*Hugo Neighborhood*). It is designed to be shared with neighbors for the purpose of helping protect our rural quality of life by promoting an informed citizenry in decision-making. The *Hugo Neighborhood* is an informal nonprofit charitable and educational organization with a land use and history mission of promoting the social welfare of its neighbors.

Land Use & History

The *Hugo Neighborhood's* land use mission is to promote Oregon Statewide Goal 1 — Citizen Involvement, and to preserve, protect, and enhance the livability and economic viability of its farms, forests, and rural neighbors. It will act, if requested, as a technical resource assisting neighbors to represent themselves.

Its history mission is to educate, collect, preserve, interpret, and research its local history and to encourage public interest in the history of the Hugo area.

Volunteer membership dues are \$10.00 annually per family and normally used for paper, ink, envelopes, publications and mailings. Send us your e-mail address if you want to know what we are doing.

Email: hugo@jeffnet.org
Web Page: <http://jeffnet.org/~hugo/>
Edited by Karen Rose, Wayne McKy, & Mike Walker

HNA&HS Officers

Hal Anthony, Outreach Chair
3995 Russell Road
Grants Pass, Oregon 97526

Wayne McKy, Chair
6497 Hugo Road
Grants Pass, Oregon 97526

Mike Walker, Education Chair
3388B Merlin Rd #195
Grants Pass, Oregon 97526

Karen Rose, Web Master
575 Red Mountain Drive
Grants Pass, Oregon 97526

Not Quality Controlled, Nor Edited

AUGUST LINDBLOM FAMILY: HUGO SETTLERS



Very Draft
Brochure 247 Of Hugo's Early
Settler Brochure Series



February 15, 2008

**Hugo Neighborhood Association &
Historical Society**