

Enos & Hettie Gwin

Enos M. Gwin

Born: 1849 Ohio
 Father's Birth Place: Ohio
 Mother's Birth Place: Pennsylvania

Hettie F. Gwin

Born: 1859 California
 Father's Birth Place: New York
 Mother's Birth Place: New York

1850 Census. Chester, Morrow County, Ohio

Enos M. Gwin Male OH 1848 2 yrs

In 1850 two year old Enos M. Gwin was with five other older siblings, the oldest of which was the head of household in Ohio.



1880 Census. Lost River, Lake County, Oregon

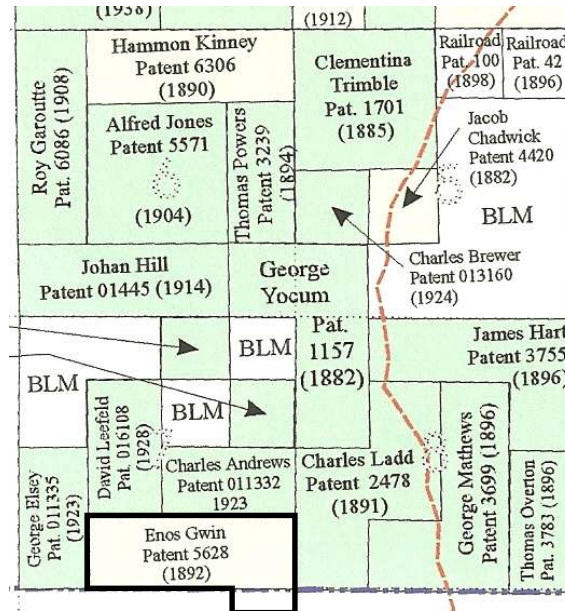
Enos Gwin	Head	OH	1849	31 yrs
Kitty Gwin	Wife	CA	1859	21 yrs
Walter Gwin	Son	CA	1878	2 yrs

In 1880 Enos was a laborer.

The Enos Gwin Family, Hugo Pioneers: ca. 1890s

1892 Enos Gwin Cash Entry Enos purchased 160 acres under Cash Entry No. 5628 in Josephine County, Oregon. It was issued March 17, 1892 to Enos M. Gwin (April 24, 1820: Sale-Cash Entry (3 Stat. 566)).¹⁻²

1895 Francis Gwin owned the homestead in 1895.³ Quartz Creek was close to the east, but the homestead was in the upper reaches of today's Laundry Creek.



Enos Gwin's 160 Acre Cash Entry: 1892

Farmer

1900 Census. Monrovia, LA County, CA

Enos Gwin	Head	OH	1849	51 yrs
Hettie F. Gwin	Wife	CA	1858	42 yrs
Walter M. Gwin	Son	CA	1878	22 yrs
Trix Huffman	Lodger	IA	1878	22 yrs
Ora Doppen	Lodger	MO	1879	21 yrs
Jennis Doppen	Dau	MO	1881	19 yrs

1910 Census. Monrovia, LA County, CA

Walter M. Gwin	Head	CA	1878	32 yrs
Enos W. Gwin	Father	OH	1849	61 yrs
Hettie F. Gwin	Mother	CA	1859	51 yrs

1920 Census. Monrovia, LA County, CA

Enos Gwin	Head	OH	1849	71 yrs
Hettie F. Gwin	Wife	CA	1859	61 yrs

Want more information? Contact an officer of the *Hugo Neighborhood* on how you can become involved in your community's history and land use.

1. Bureau of Land Management (BLM), General Land Office (GLO) Records. 2007. Official Federal Land Records Site (<http://www.glorerecords.blm.gov/>). Internet.

2. Hugo Neighborhood. 2007. *Hugo Pioneers*. Map Of Federal Land Transfer in Hugo, Oregon. Hugo, OR.

3. Koch, Joseph, Draughtsman. 1895 Official Josephine County, Oregon. Map. Scale 1 inch = 1 mile. Meston - Dygert Book M'F'G. Portland, OR.

Hugo Neighborhood Association & Historical Society's Mission

This information brochure is one of a series of documents published by the Hugo Neighborhood Association & Historical Society (*Hugo Neighborhood*). It is designed to be shared with neighbors for the purpose of helping protect our rural quality of life by promoting an informed citizenry in decision-making. The *Hugo Neighborhood* is an informal nonprofit charitable and educational organization with a land use and history mission of promoting the social welfare of its neighbors.

Land Use & History

The *Hugo Neighborhood's* land use mission is to promote Oregon Statewide Goal 1 — Citizen Involvement, and to preserve, protect, and enhance the livability and economic viability of its farms, forests, and rural neighbors. It will act, if requested, as a technical resource assisting neighbors to represent themselves.

Its history mission is to educate, collect, preserve, interpret, and research its local history and to encourage public interest in the history of the Hugo area.

Volunteer membership dues are \$10.00 annually per family and normally used for paper, ink, envelopes, publications and mailings. Send us your e-mail address if you want to know what we are doing.

Email: hugo@jeffnet.org
Web Page: <http://jeffnet.org/~hugo/>
Edited by Jean Boling, Karen Rose,
Wayne McKy, & Mike Walker

HNA&HS Officers

Wayne McKy, Chair
6497 Hugo Road
Grants Pass, Oregon 97526

Mike Walker, Education Chair
3388B Merlin Rd #195
Grants Pass, Oregon 97526

Web Master

Karen Rose, Web Master
575 Red Mountain Drive
Grants Pass, Oregon 97526

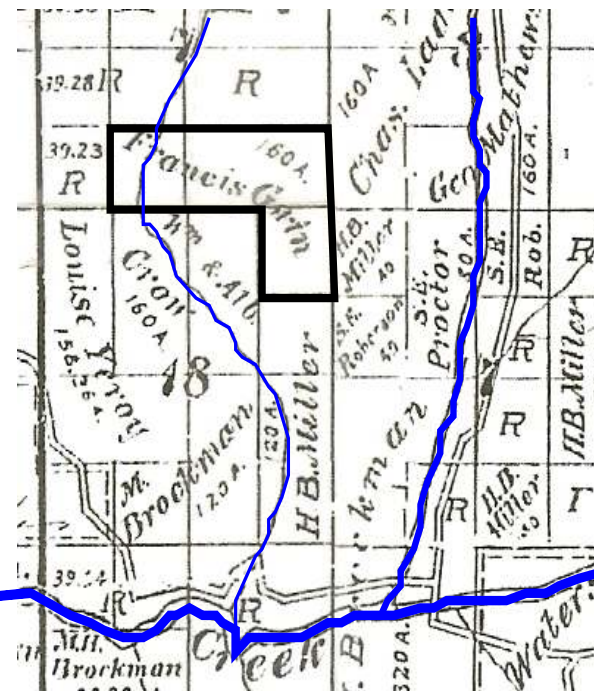
Josephine County Historical Society

Jean Boling, Historic Sites Chair
Josephine County Historical Society
124 NW Booth Street
Grants Pass, Oregon 97526

ENOS GWIN FAMILY: HUGO PIONEERS

Very Draft

Brochure 25 in Hugo's Pioneers Brochure Series



Francis Gwin's Ranch: 1895

Not Quality Controlled, Nor Edited

February 21, 2008
Updated July 2, 2011

Hugo Neighborhood Association &
Historical Society
Josephine County Historical Society