

Single Charles Bee: Early Hugo Settler

Charles Bee

Born: 1853
 Birth Place: Pennsylvania
 Father's Birth Place: Pennsylvania
 Mother's Birth Place: Pennsylvania

Charles Bee would be able to read and write and was single while in Oregon. He would eventually arrive and settle in the Three Pines Fruit Tracts of Hugo Oregon.

1910 "Three Pines Fruit Tracts" The 1910 *Fruit Tracts* subdivided the land into five acre parcels where it was advertised that one could make a good living raising fruit.¹ It was adjacent and to the east of the Town of Three Pines. George L. and Anna E. Davis dedicated the tracts, streets, and alleys.

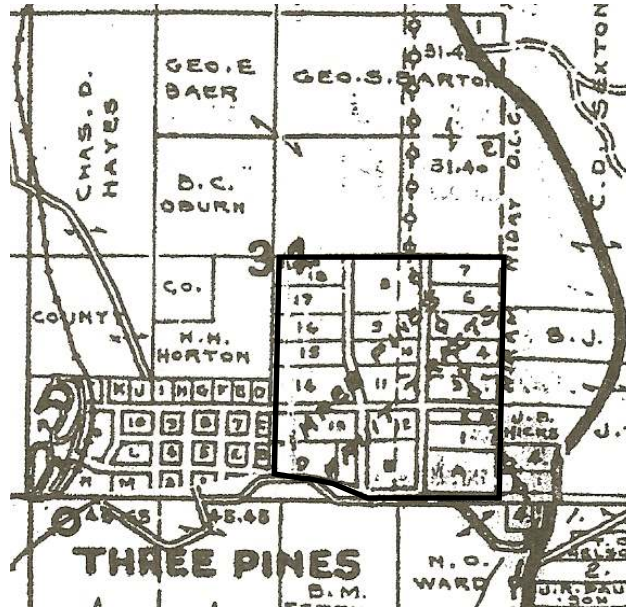
Oct. 24, 1910 Public streets dedicated by Davis.
 June 10, 1910 Contract Surveyor approved.
 June 10, 1910 Josephine County Surveyor approved.
 Nov. 2, 1910 Josephine County Assessor approved.
 Nov. 2, 1910 Board of Commissioners approved.

The Three Pines Fruit Tracts Trail was an early settler trail. In the 1910s it was designed as part of the Three Pines Fruit Tracts Subdivision in conjunction with the platting of the Town of Three Pines, Oregon.

Charles Bee, Early Fruit Tracts Neighbor: 1911 - ca., 1920

1911 Town of Three Pines²

May 30, 1911 Public streets dedicated by Steels.
 June 6, 1911 Contract Surveyor approved.
 Nov. 6, 1911 Josephine County Surveyor approved.
 Nov. 7, 1911 Board of Commissioners approved.
 Nov. 6, 1912 Josephine County Assessor approved.



Three Pines Fruit Tracts: 1932

More Information

1910 Census. Klamath Falls Ward 2 Precinct. Klamath County, Oregon

Single Charles Bee Laborer 57 years

1911 "Mr. Bee, who recently purchased one of the fruit tracts, has completed his house and is now living in it." *Rogue River Courier*. November 17, 1911. Three Pines.

1920 Census. Lucky Queen Precinct, Josephine County, Oregon

Single Charles Bee 67 years

Want more information? Contact an officer of the *Hugo Neighborhood* on how you can become involved in your community's history and land use.

1. Davis, George & Anna. 1910. *Map of Three Pines Fruit Tracts*.
 2. Steel. 1912. *Map Of The Town Of Three Pines, Josephine Co. ORE.* Three Pines, OR
 3. Metsher, Chas. F. 1932 *Metsker Map. Josephine County, Oregon.* Portland, OR.

Hugo Neighborhood Association & Historical Society's Mission

This information brochure is one of a series of documents published by the Hugo Neighborhood Association & Historical Society (*Hugo Neighborhood*). It is designed to be shared with neighbors for the purpose of helping protect our rural quality of life by promoting an informed citizenry in decision-making. The *Hugo Neighborhood* is an informal nonprofit charitable and educational organization with a land use and history mission of promoting the social welfare of its neighbors.

Land Use & History

The *Hugo Neighborhood's* land use mission is to promote Oregon Statewide Goal 1 — Citizen Involvement, and to preserve, protect, and enhance the livability and economic viability of its farms, forests, and rural neighbors. It will act, if requested, as a technical resource assisting neighbors to represent themselves.

Its history mission is to educate, collect, preserve, interpret, and research its local history and to encourage public interest in the history of the Hugo area.

Volunteer membership dues are \$10.00 annually per family and normally used for paper, ink, envelopes, publications and mailings. Send us your e-mail address if you want to know what we are doing.

Email: hugo@jeffnet.org

Web Page: <http://jeffnet.org/~hugo/>

Edited by Karen Rose, Wayne McKy, & Mike Walker

HNA&HS Officers

Hal Anthony, Outreach Chair
3995 Russell Road
Grants Pass, Oregon 97526

Wayne McKy, Chair
6497 Hugo Road
Grants Pass, Oregon 97526

Mike Walker, Education Chair
3388B Merlin Rd #195
Grants Pass, Oregon 97526

Karen Rose, Web Master
575 Red Mountain Drive
Grants Pass, Oregon 97526

Not Quality Controlled, Nor Edited

Brochure 26 in Hugo's Early Settler Brochure Series

HNA&HS 2007 - 26

C:\Documents and Settings\mike\My Documents\Genealogy\History_Brochures\People Settlers 1900 - 1930s\BROCHURE_26 Bee Charles 010208.wpd

CHARLES BEE: HUGO SETTLER



Very Draft
Brochure 26 Of Hugo's Early
Settler Brochure Series



December 23, 2007

**Hugo Neighborhood Association &
Historical Society**