

Bachelor Charles Ladd

Charles Ladd

Born: 1840 Vermont
Died: May 8, 1915 Josephine Co., OR
Father's Birth Place: New Hampshire
Mother's Birth Place: Vermont

1891 Charles Ladd's Hugo Homestead On May 12, 1891 Charles Ladd was issued a homestead certificate for 160 acres in Hugo, Oregon (Patent No. 2478).^{2,3} The intent of the 1862 Homestead Act was to grant land for agriculture. James, and other claimants, had to prove they lived on the land for a minimum of five years, and made the required improvements before they were eligible to be issued a certificate. For a variety of reasons, the "proving up" period was five to 10 years and longer.



1880 Census. Galice Creek Precinct, Josephine County, Oregon

Charles Ladd Laborer VT 1841 39 yrs

In 1880 Charles Ladd was living with the William Crow family and several other boarders.

1. Bureau of Land Management (BLM), General Land Office (GLO) Records. 2007. Official Federal Land Records Site (<http://www.glorerecords.blm.gov/>). Internet.

2. Hugo Neighborhood. 2007. *Hugo Pioneers*. Map Of Federal Land Transfer in Hugo, Oregon. Hugo, OR.

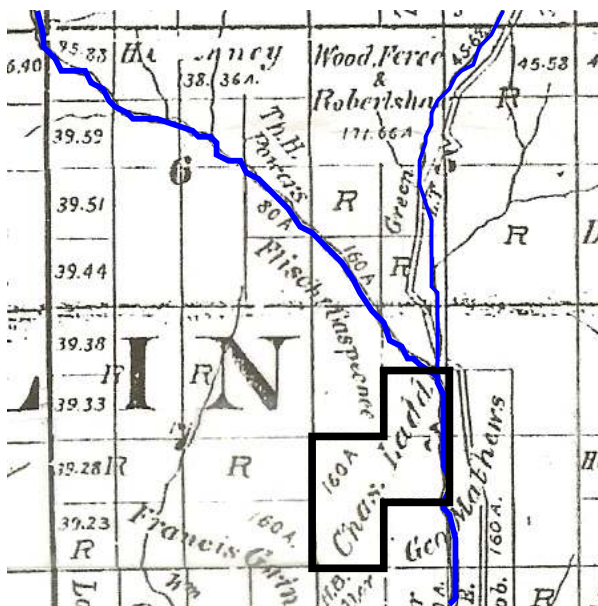
3. Koch, Joseph , Draughtsman. 1895 Official Josephine County, Oregon. Map. Scale 1 inch = 1 mile. Meston - Dygert Book M'F'G. Portland, OR.

4. Oregon Death Index, 1903-98. Internet.

5. USDA, Forest Service, North Pacific Region, National Forest Rogue River & Siskiyou. 1939 - 1940. *Project F.S. 6-66*. Designating Symbol GIZ.

Charles Ladd, A Hugo Pioneer: ca., 1890s - 1915

1895 Charles Ladd was a farmer on his homestead in 1895.³ The eastern portion of the homestead was in the bottom lands of Quartz Creek just south of its confluence with Bummer Creek (see title page).⁵



Charles Ladd's Quartz Creek Homestead: 1895

1900 Census?

Charles Ladd Head VT 1839 61 yrs

Transcribed as Ludd in 1900 census. Charles was a farmer.

Merlin Justice Of The Peace

1910 Census. Merlin Precinct, Josephine Co., OR
Charles Ladd Head VT 1839 71 yrs

In 1910 Charles Ladd was the Justice of the Peace for Merlin, Oregon.

1915 Charles Ladd passed May 8, 1915 in Josephine County, Oregon.

"Last Monday morning the people of Merlin made a search for their justice of the peace, Chas. Ladd, who had not been seen since last Saturday, and they found him in his bed at his bachelor home but death had preceded them, it being the general opinion that he passed away some time Saturday night or Sunday morning. Coroner Truax was called, but it was evident that death was the natural causes so no inquest was held. Mr. Ladd was a native of Vermont but had been a resident of this country for nearly 32 years. He was 76 years of age when death relieved him after several months of suffering. He had no known relatives and had never been married. The funeral was held yesterday at that place." The Oregon Observer. May 12, 1915.

Question. Was Charles buried on his property?

Want more information? Contact an officer of the *Hugo Neighborhood* on how you can become involved in your community's history and land use.

Hugo Neighborhood Association & Historical Society's Mission

This information brochure is one of a series of documents published by the Hugo Neighborhood Association & Historical Society (*Hugo Neighborhood*). It is designed to be shared with neighbors for the purpose of helping protect our rural quality of life by promoting an informed citizenry in decision-making. The *Hugo Neighborhood* is an informal nonprofit charitable and educational organization with a land use and history mission of promoting the social welfare of its neighbors.

Land Use & History

The *Hugo Neighborhood's* land use mission is to promote Oregon Statewide Goal 1 — Citizen Involvement, and to preserve, protect, and enhance the livability and economic viability of its farms, forests, and rural neighbors. It will act, if requested, as a technical resource assisting neighbors to represent themselves.

Its history mission is to educate, collect, preserve, interpret, and research its local history and to encourage public interest in the history of the Hugo area.

Volunteer membership dues are \$10.00 annually per family and normally used for paper, ink, envelopes, publications and mailings. Send us your e-mail address if you want to know what we are doing.

Email: hugo@jeffnet.org

Web Page: <http://www.hugoneighborhood.org/>

Edited by Jean Boling, Karen Rose,
Wayne McKy, & Mike Walker

HNA&HS Officers

Wayne McKy, Chair
6497 Hugo Road
Grants Pass, Oregon 97526

Mike Walker, Education Chair
3388B Merlin Rd #195
Grants Pass, Oregon 97526

Web Master

Karen Rose, Web Master
575 Red Mountain Drive
Grants Pass, Oregon 97526

Josephine County Historical Society

Jean Boling, Historic Sites Chair
Josephine County Historical Society
124 NW Booth Street
Grants Pass, Oregon 97526

Not Quality Controlled, Nor Edited

Brochure 35 in Hugo's Pioneers Brochure Series - HNA&HS 2008/2011 - 35
C:\Documents and Settings\mike\My Documents\Genealogy\History_Brochures\People Pioneers
1800s\BROCHURE_35 Ladd Charles 060908.wpd

BACHELOR CHARLES LADD: HUGO PIONEER

Draft

Brochure 35 in Hugo's Pioneers Brochure Series



*Charles Ladd's 1891 Quartz Creek Homestead
On 1939 Aerial Photograph*

June 9, 2008
Updated July 3, 2011

Hugo Neighborhood Association &
Historical Society
Josephine County Historical Society