

Lanora & Iona Strong: Hugo's Early Settlers

Lanora L. Strong

Born: 1875 Oregon
 Father's Birth Place: Missouri
 Mother's Birth Place: Iowa

Iona M. (Akers) Strong

Born: 1877 Oregon
 Father's Birth Place: Tennessee
 Mother's Birth Place: Iowa

May 9, 1861 "Military Bounty Land Act of March 3, 1855, Roseburg, Oregon. May 9, 1861 Military Warrant #92568 in the name of Rice Benson has this day been located by Anson Turner..."¹⁻²

Owners of Turner Military Warrant: 1861 - 1934³

| | |
|-------------|--------------------------------------|
| 1861 - 1870 | Robert & Clementina Trimble (160 ac) |
| 1870 - 1878 | Clementina Trimble (160 ac) |
| 1878 - 1903 | William Trimble (160 ac) |
| 1903 - 1905 | James Trimble (160 ac) |
| 1905 - 1908 | L. L. & Iona Strong (160 ac) |
| 1908 - 1909 | Fred & Mary Geyer (160 ac) |
| 1909 - 1920 | W. G. & Rachel Vanderbilt (80 ac) |
| 1920 - 1934 | Nelson & Mazella Ward (40 acres) |

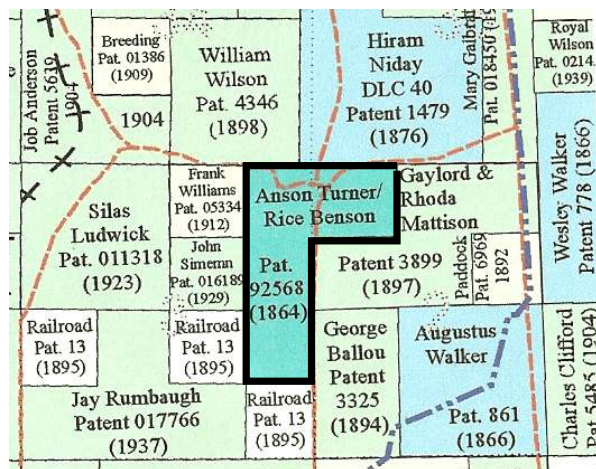
1900 Census. Merlin Precinct, Josephine Co., OR

| | | | | |
|-------------------|---------------|----|------|--------|
| Lanora L. Stong | Head | OR | 1875 | 25 yrs |
| Jane M Stong | Wife | OR | 1877 | 23 yrs |
| Audra Stong | Dau | OR | 1855 | 2 yrs |
| Margaret E. Akers | Mother-in-law | OR | 1855 | 45 yrs |

Lanora's occupation was farmer. Last name can be Strong or Stong. Jame M Stong is also Iona Strong and Jane M. Akers.

The Lanora Strong Family, Hugo Settlers: 1910s

1905 In 1905 the Strong family secured the 160 acre Turner Military from the Trimble family.⁴



**Turner Military Warrant: 1864
Became Strong Farm From 1905 - 1908**

The open spaces of the Strong's 160 acres were probably dryland pasture. The land has a long farming history as it first became a large pioneer farm of 160 acres in 1861.¹⁻³

1. Bureau of Land Management (BLM), General Land Office (GLO) Records. 2007. Official Federal Land Records Site (<http://www.glorecords.blm.gov/>). Internet.
 2. Hugo Neighborhood. 2007. *Hugo Pioneers*. Map Of Federal Land Transfer in Hugo, Oregon. Hugo, OR.
 3. Hugo Neighborhood. 2002. *Dickerson's Corner: 1945 - 2002*. Hugo, OR.

Farmers

Atwood Assessment⁵ The Vanderbilt-Ward House stands on property originally owned by Anson Turner who received it as part of a military allotment in the late 1860s. The land was purchased by Robert Trimble whose widow sold it to L. L. Strong in 1905. The Strongs sold the land to the W. G. Vanderbilts in 1909 for \$3200. W. G. Vanderbilt was born in Iowa in 1868. He and his wife Rachel and two children moved west to Josephine County early in the 1900s. They farmed their newly acquired land for several years until W. G. Vanderbilt died in October of 1920. His widow immediately sold the land to Nelson Ward. The Wards had moved to the Hugo-Three Pines area in 1907 and purchased land from the McCormick family above what is now Hasis Road. Nelson Ward operated a range cattle operation on the ranch and did general farming. The land was purchased after World War II by Mr. and Mrs. Clayton Dickerson.

Longtime area residents believe that this house was built by the Vanderbilts, although some suggest that the Trimbles or the Strongs may have constructed it.

The Vanderbilt-Ward House is one of the oldest standing residences in the Three-Pines-Hugo area. Many have burned. It commands a prominent and highly visible position above Three Pines Road.

Want more information? Contact an officer of the *Hugo Neighborhood* on how you can become involved in your community's history and land use.

4. Hugo Neighborhood. 2008. *Trimbles: Hugo Pioneers*. Hugo, OR.
 5. Atwood, Kay. 1984. *Josephine County Historical Resources Inventory: 1983 - 1984*. Volume I. Grants Pass, OR.
 6. Metsher, Chas. F. 1932 *Metsker Map. Josephine County, Oregon*. Portland, OR.

Hugo Neighborhood Association & Historical Society's Mission

This information brochure is one of a series of documents published by the Hugo Neighborhood Association & Historical Society (*Hugo Neighborhood*). It is designed to be shared with neighbors for the purpose of helping protect our rural quality of life by promoting an informed citizenry in decision-making. The *Hugo Neighborhood* is an informal nonprofit charitable and educational organization with a land use and history mission of promoting the social welfare of its neighbors.

Land Use & History

The *Hugo Neighborhood's* land use mission is to promote Oregon Statewide Goal 1 — Citizen Involvement, and to preserve, protect, and enhance the livability and economic viability of its farms, forests, and rural neighbors. It will act, if requested, as a technical resource assisting neighbors to represent themselves.

Its history mission is to educate, collect, preserve, interpret, and research its local history and to encourage public interest in the history of the Hugo area.

Volunteer membership dues are \$10.00 annually per family and normally used for paper, ink, envelopes, publications and mailings. Send us your e-mail address if you want to know what we are doing.

Email: hugo@jeffnet.org

Web Page: <http://jeffnet.org/~hugo/>

Edited by Karen Rose, Wayne McKy, & Mike Walker

HNA&HS Officers

Hal Anthony, Outreach Chair
3995 Russell Road
Grants Pass, Oregon 97526

Wayne McKy, Chair
6497 Hugo Road
Grants Pass, Oregon 97526

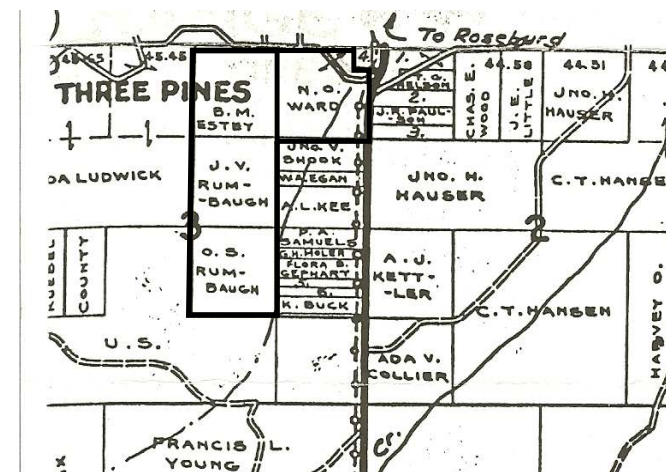
Mike Walker, Education Chair
3388B Merlin Rd #195
Grants Pass, Oregon 97526

Karen Rose, Web Master
575 Red Mountain Drive
Grants Pass, Oregon 97526

LANORA STRONG FAMILY: HUGO SETTLERS



Very Draft
Brochure 385 Of Hugo's Early
Settler Brochure Series



Nelson Ward's Three Pines Ranch: 1932
40-Acre Farm Had Been Part of 160 Acre Strong Farm

Not Quality Controlled, Nor Edited

January 24, 2008

Hugo Neighborhood Association &
Historical Society

Brochure 385 in Hugo's Early Settler Brochure Series
HNA&HS 2007 - 385

C:\Documents and Settings\mike\My Documents\Genealogy\History_Brochures\People Settlers 1900 - 1930s\BROCHURE_385 Strong Lanora 012408.wpd