

---

---

## Neelys' Private Cemetery

**Neelys and the Trimbles** The Neelys and the Trimbles were early pioneer families to northern Josephine County, Oregon.

**1870** “. . . and in 1870 [The Trimbles] came to Josephine County. Two months after their arrival Mr. Trimble died, leaving a wife and 12 children, one boy being adopted.”<sup>1</sup> Robert probably died on the family's Turner-Benson Military Warrant. Clementina's son-in-law, Garrett Crockett, represented her in dealing with the estate of her husband starting April 30, 1870.

**1870** James Neely married Mrs. Elizabeth F. Gibson July 23, 1870. Her maiden name was Vannoy and until his death she had been married to William A. Gibson. James was a 43 year old farmer living in the Jump Off Joe Precinct in 1880. Members of his household were 35 year old wife Elizabeth F., 6 year old Florence, 4 year old Everet, 3 year old Edward and 12 year old Elmer Gibson.



**1895** An “E. F.” Neely identified on the 1895 Josephine County map was the owner of almost 600 acres where the W<sup>M</sup> W. & E. J. Neely children and Trimbles' graves are located adjacent to the northern boundary of today's PVC.<sup>2</sup> W<sup>M</sup> W. was William Wallace Neely, a brother of James Neely.

---

1. Hugo Neighborhood & Josephine County Historical Society. 2007. *Crocketts: Hugo Pioneers; Trimbles: Hugo Pioneers; Trimbles: Josephine County Census; Trimbles: Military Warrant; Eurydice Trimble Crockett: Hugo Pioneer*. Hugo, OR.

2. Koch, Joseph, Draughtsman. 1895 Official Josephine County, Oregon. Map. Scale 1 inch = 1 mile. Meston - Dygert Book M'F'G. Portland, OR.

3. Hugo Neighborhood, Josephine County Historical Society, & Rogue Advocates. 2007. *O & C Railroad*. Hugo, OR.

---

---

## Trimbles' Private Cemetery

**1866 Railroad Grant** Congress enacted legislation in 1866 authorizing a grant of public domain lands to be conveyed to a O&C Railroad to help finance construction of a railroad from Portland, Oregon to the California border.<sup>3-4</sup>

**1896 O & C Railroad Patent** For a variety of reasons the final patents to the railroad for railroad construction were issued much later than the work was completed. On March 17, 1896 the O & C Railroad Company was issued a railroad grant Patent No. 38 for 109,827.83 acres.<sup>3-4</sup> It would sell/grant to the PVC Association (PVCA) 40 acres of that patent three years later.

**Hypothesis** Research underway is testing the hypothesis that the O&C Railroad was using the 40 acres as a cemetery for the period railroad construction was stalled in northern Josephine County from 1872 - 1883.<sup>3-4</sup>

**Neely Family** W<sup>M</sup> W. & E. J. Neely lost four of their children from 1877 - 1882.

2-year old Lela J. Neely	1877
5-year old Alice Neely	1882
4-year old Franklin Neely	1882
9-month old Mattie R. Neely	1882

All graves are listed with the Oregon Commission on Historic Cemeteries (OPS 97 & OPS 166).

---

4. Hugo Neighborhood, Josephine County Historical Society, & Rogue Advocates. 2007. *Applegate Trail & Pleasant Valley Cemetery*. Hugo, OR.  
5. 2007 Josephine County Assessor map.

---

---

## Pleasant Valley Cemetery (PVC) - Railroad Cemetery: ca., 1872 - 1883

**Trimble Family** Two members of the Trimble family died between 1870 and 1882.

Robert Trimble	1870
Henry Trimble	1881
Elmer Trimble	1884
Medissia [Trimble] Rowe	1887
Clementina Trimble	1903

**Private Platted Family Grave Sites** Why are the two ca., 1870s - 1880s platted cemeteries for the Neelys and Trimbles adjacent to the PVC before it became an official cemetery with deeded railroad land in 1899?<sup>5-6</sup> The W<sup>M</sup> W. & E. J. Neely family is related to the James Neely family, but the Trimbles were living on the Turner-Benson Military Warrant lands 1 to 2 miles to the north of their platted cemetery.<sup>1</sup> A further question is the significance of two early PVC tombstones (i.e., W. A. Gibson's tombstone dated July 23, 1869 and the Jacob Miller tombstone dated February 27, 1878), and many other tombstones with 1880s and 1890s dates before the PVCA gained ownership in 1899.

**Summary** The ground today's PVC is located had a history as a cemetery ca., 1870s - 1898 prior to the PVCA having the official status of land ownership.

**Want more information?** Contact an officer of the *Hugo Neighborhood* on how you can become involved in your community's history and land use.

---

6. Conex, Inc. 1974. *Survey Of Existing Roadway* [Schoolhouse Creek Road]. Survey No. 59 74. Grants Pass, OR.

## Hugo Neighborhood Association & Historical Society's Mission

This information brochure is one of a series of documents published by the Hugo Neighborhood Association & Historical Society (*Hugo Neighborhood*). It is designed to be shared with neighbors for the purpose of helping protect our rural quality of life by promoting an informed citizenry in decision-making. The *Hugo Neighborhood* is an informal nonprofit charitable and educational organization with a land use and history mission of promoting the social welfare of its neighbors.

### Land Use & History

The *Hugo Neighborhood's* land use mission is to promote Oregon Statewide Goal 1 — Citizen Involvement, and to preserve, protect, and enhance the livability and economic viability of its farms, forests, and rural neighbors. It will act, if requested, as a technical resource assisting neighbors to represent themselves.

Its history mission is to educate, collect, preserve, interpret, and research its local history and to encourage public interest in the history of the Hugo area.

Volunteer membership dues are \$10.00 annually per family and normally used for paper, ink, envelopes, publications and mailings. Send us your e-mail address if you want to know what we are doing.

Email: [hugo@jeffnet.org](mailto:hugo@jeffnet.org)

Web Page: <http://www.hugoneighborhood.org/>

Edited by Jean Boling, Wayne McKy,

Karen Rose, & Mike Walker

### HNA&HS Officers

Hal Anthony, Outreach Chair  
3995 Russell Road  
Grants Pass, Oregon 97526

Wayne McKy, Chair  
6497 Hugo Road  
Grants Pass, Oregon 97526

Karen Rose, Web Master  
575 Red Mountain Drive  
Grants Pass, Oregon 97526

Mike Walker, Education Chair, Hugo Neighborhood; Director, Rogue Advocates  
3388B Merlin Rd #195  
Grants Pass, Oregon 97526

### Josephine County Historical Society

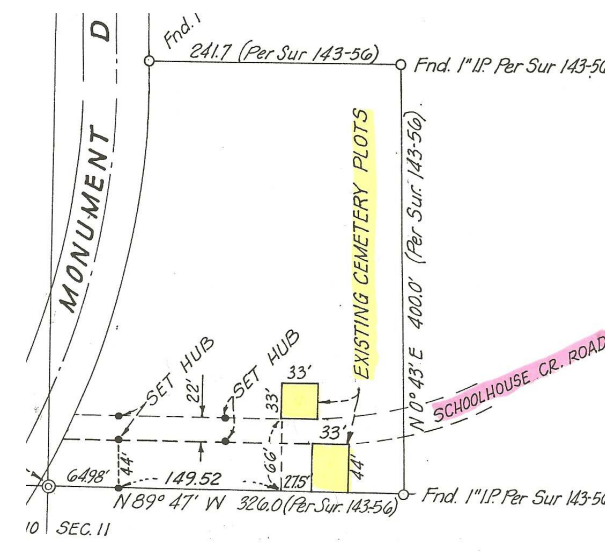
Jean Boling, Historic Sites Chair  
214 NW Booth Street  
Grants Pass, Oregon 97526

# NEELY & TRIMBLE CEMETERIES

Brochure 61 in Hugo's Pioneers Brochure Series



Part of the 1.5 mile Applegate Trail nomination to Federal Register of Historic Places



Trimble & Neely Graves

May 13, 2008

Hugo Neighborhood Association & Historical Society  
Josephine County Historical Society  
Rogue Advocates

Brochure 61 in Hugo's Pioneers Brochure Series

HNA&HS 2008 - 61

C:\Documents and Settings\mike\My Documents\Genealogy\History\_Brochures\People Pioneers 1800s Quarry Section\BROCHURE\_61 PVC 3 Neelys & Trimbles 051308.wpd