

## Hugo's Pioneers

### Robertshaw

Born:  
 Birth Place:  
 Father's Birth Place:  
 Mother's Birth Place:

???  
 Born:  
 Birth Place:  
 Father's Birth Place:  
 Mother's Birth Place:

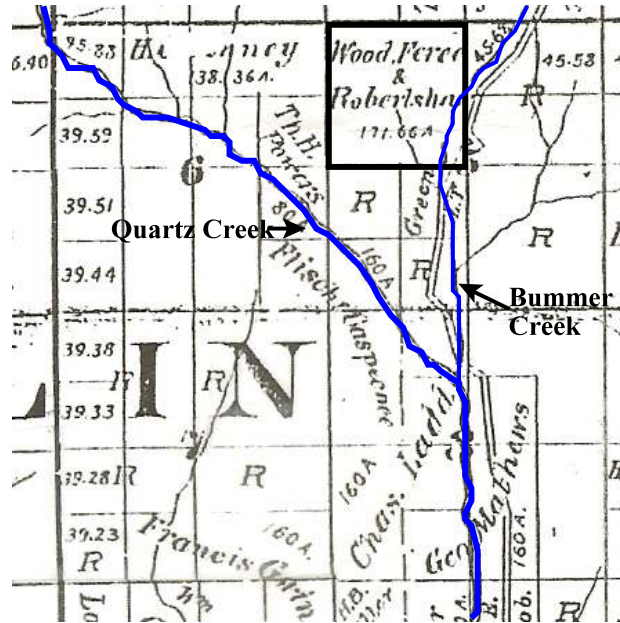
**1885 Trimble Homestead** In 1885 Clementina Trimble was issued a homestead patent for 171.66 acres in Hugo, Oregon (Patent No. 1781).



1. Bureau of Land Management (BLM), General Land Office (GLO) Records. 2007. Official Federal Land Records Site (<http://www.glorerecords.blm.gov/>). Internet.
2. Hugo Neighborhood. 2007. *Hugo Pioneers*. Map Of Federal Land Transfer in Hugo, Oregon. Hugo, OR.
3. Koch, Joseph , Draughtsman. 1895 Official Josephine County, Oregon. Map. Scale 1 inch = 1 mile. Meston - Dygert Book M'F'G. Portland, OR.
4. USDA, Forest Service, North Pacific Region, National Forest Rogue River & Siskiyou. 1939 - 1940. *Project F.S. 6-66*. Designating Symbol GIZ.
5. U.S.G.S. 1998. *Merlin, OR 1998*. Merlin Quadrangle: 7.5 minute topographic series, scale 1:24,000, and contour interval 40 feet. Denver, CO.

## The Robertshaw Family, Hugo Pioneers: ca.,1890s - 19??

**1895** At some point Trimble sold her homestead and by 1895 it was owned by Wood Fereed and Robertshaw.<sup>3</sup>

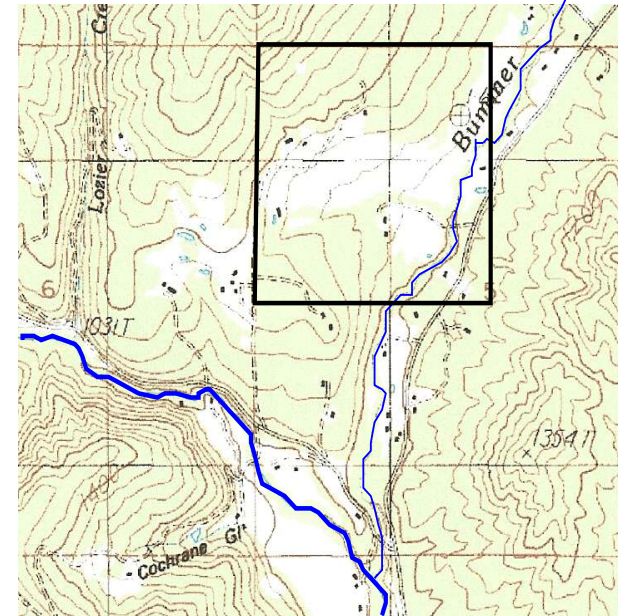


*Robertshaw 160 Acre Quartz Creek Ranch: 1895*

**1939** The 1939 aerial photograph clearly shows the work in clearing pasture by the Trimbles and others of the relatively mild slope east of Bummer Creek.<sup>4</sup>

## Bummer Creek Ranch

**1998** The 1998 USGS topographic Merlin Quadrangle map covers the old Trimble Homestead and Robertshaw Ranch.<sup>5</sup>



*Old Trimble Homestead: 1885,  
 Robertshaw Ranch: 1895, &  
 On Modern Topographic Map: 1998*

**Want more information?** Contact an officer of the *Hugo Neighborhood* on how you can become involved in your community's history and land use.

## Hugo Neighborhood Association & Historical Society's Mission

This information brochure is one of a series of documents published by the Hugo Neighborhood Association & Historical Society (*Hugo Neighborhood*). It is designed to be shared with neighbors for the purpose of helping protect our rural quality of life by promoting an informed citizenry in decision-making. The *Hugo Neighborhood* is an informal nonprofit charitable and educational organization with a land use and history mission of promoting the social welfare of its neighbors.

### Land Use & History

The *Hugo Neighborhood's* land use mission is to promote Oregon Statewide Goal 1 — Citizen Involvement, and to preserve, protect, and enhance the livability and economic viability of its farms, forests, and rural neighbors. It will act, if requested, as a technical resource assisting neighbors to represent themselves.

Its history mission is to educate, collect, preserve, interpret, and research its local history and to encourage public interest in the history of the Hugo area.

Volunteer membership dues are \$10.00 annually per family and normally used for paper, ink, envelopes, publications and mailings. Send us your e-mail address if you want to know what we are doing.

Email: [hugo@jeffnet.org](mailto:hugo@jeffnet.org)

Web Page: <http://www.hugoneighborhood.org/>

Edited by Jean Boling, Karen Rose,  
Wayne McKy, & Mike Walker

#### HNA&HS Officers

Wayne McKy, Chair  
6497 Hugo Road  
Grants Pass, Oregon 97526

Mike Walker, Education Chair  
3388B Merlin Rd #195  
Grants Pass, Oregon 97526

#### Web Master

Karen Rose, Web Master  
575 Red Mountain Drive  
Grants Pass, Oregon 97526

#### Josephine County Historical Society

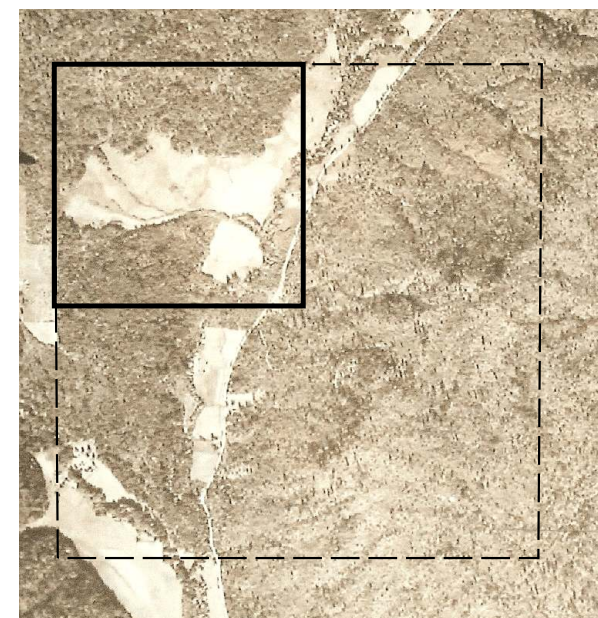
Jean Boling, Historic Sites Chair  
214 NW Booth Street  
Grants Pass, Oregon 97526

**Not Quality Controlled, Nor Edited**

# ROBERTSHAW FAMILY: HUGO PIONEERS

Very Draft

Brochure 67 in Hugo's Pioneers Brochure Series



*Clementina Trimble's Old Homestead: 1885  
On 1939 Aerial Photograph*

**January 13, 2008  
Updated July 5, 2011**

**Hugo Neighborhood Association &  
Historical Society  
Josephine County Historical Society**