

Robert & Clementina Trimble Family

Robert Trimble

Born: July 9, 1819 Westmoreland Co., PA

Clementina (Packard) Trimble

Born: August 2, 1828 Sandusky County OH

1846 Robert Trimble and Clementina Packard were married in 1846 at Louisa County, Iowa.

1852 "In 1852 Mr. And Mrs. Trimble crossed the plains by ox team and entered the Willamette Valley, . . ."1-3



May 10, 1861 On the day after he received it from the General Land Office, Anson Turner sold his certificate of location for a 169.89 acre military warrant to Robert Trimble.4

1866 Douglas County Donation Land Claim From 1853 through 1866 the Trimbles proved up Donation Land Claim Patent No. 655 for 325.9 acres in Douglas County, Oregon. It was issued July 11, 1866 to Robert and Clementine.5-6

1870 Robert Passed ". . . and in 1870 came to Josephine County. Two months after their arrival her Mr. Trimble died, leaving a wife and 12 children, one boy being adopted."1

1. *Oregon Observer*. Died - Trimble. January 31, 1903.

2. *Grants Pass Courier*. Pioneer Smith In G. P. Since '68. April 3, 1935.

Trimbles Josephine County Census: 1870 - 1900

1870 Census. Leland Precinct, Josephine Co., OR

Clementine Trimble	Head	OH	1824	46 yrs
William Trimble	Son	OR	1851	19 yrs
Malissa Trimble	Dau	OR	1854	16 yrs
James Trimble	Son	OR	1857	13 yrs
McKinzie Trimble	Son	OR	1859	11 yrs
Caroline Trimble	Dau	OR	1872	8 yrs
John Trimble	Son	OR	1874	6 yrs
Charles Trimble	Son	OR	1876	4 yrs
Mary Trimble	Dau	OR	1878	2 yrs
Abigal Burt	Teacher	IL	1837	33 yrs

Clementine's occupation was housekeeper. Abigal's occupation was school teacher.

1880 Census. Jump Off Joe Precinct, Josephine County, Oregon

Clement Trimble	Mother	OH	1828	52 yrs
Medesse Vickers	Dau	OR	1855	25 yrs
McKenzie Trimble	Son	OR	1859	21 yrs
John M. Trimble	Son	OR	1862	18 yrs
Charles Trimble	Son	OR	1865	15 yrs
Mary E. Trimble	Dau	OR	1868	12 yrs
Robert Trimble	G-son	OR	1874	6 yrs
Mary E. Trimble	G-dau	OR	1876	4 yrs
Joshire Trimble	G-son	OR	1877	3 yrs
Ellonora Vickers	G-dau	OR	1875	5 yrs
Landora Vickers	G-dau	OR	1877	3 yrs
John G. Williams	Boarder	OR	1864	16 yrs

McKenzie, John, and Charles Trimble's occupation was farmer. John G. Williams was a farm laborer.

Want More Information

1887 Caroline "Carrie" Trimble and Britton A. Williams married on November 14, 1877 in Josephine County, Oregon.

1900 Census. South Grants Pass Precinct, Josephine County, Oregon

Britton Williams	Head	MO	1851	49 yrs
Carrie[Trimble]Williams	Wife	OR	1862	38 yrs
Eddie R. Williams	Son	OR	1879	21 yrs
Henry P. Williams	Son	OR	1881	19 yrs
Leonidy E. Williams	Son	OR	1884	16 yrs
Charles L. Williams	Son	OR	1886	14 yrs
Roy K. Williams	Son	OR	1882	18 yrs
Clementine Trimble	M-in-law	OH	1823	77 yrs
Olie Shattuck	Cook	TX	1878	22 yrs
Mamie M. Crossley	Servant	NE	1870	30 yrs
George Trimble	Brother-in-law	OR	1876	24 yrs
Charles Trimble	Brother-in-law	OR	1878	22 yrs
Nine "9" Boarders				

Britton was a hotel keeper. Eddie was a railroad fireman. Henry was a blacksmith. Leonidy was a salesman.

1903 Clementina Passed³

Want more information? Contact an officer of the *Hugo Neighborhood* on how you can become involved in your community's land use and history.

3. Hugo Neighborhood & Josephine County Historical Society. 2007. (*Crocketts: Hugo Pioneers; Trimbles: Hugo Pioneers; Trimbles: Josephine County Census; Trimbles: Military Warrant; Eurydice Trimble Crockett: Hugo Pioneer*). Hugo, OR.

4. Josephine County Abstract Co. 1946. *Abstract Of Title To NE ¼ Of NE ¼ Of Section 3, T.35S. R.6W. No. 3117, No. 20087, & No. 2558. Grants Pass, OR; Hugo Neighborhood. 2002. Dickerson's Corner: 1945 - 2002. Brochure. Hugo, OR.*

Hugo Neighborhood Association & Historical Society's Mission

This information brochure is one of a series of documents published by the Hugo Neighborhood Association & Historical Society (Hugo Neighborhood). It is designed to be shared with neighbors for the purpose of helping protect our rural quality of life by promoting an informed citizenry in decision-making. The Hugo Neighborhood is an informal nonprofit charitable and educational organization with a land use and history mission of promoting the social welfare of its neighbors.

Land Use & History

The Hugo Neighborhood's land use mission is to promote Oregon Statewide Goal 1 — Citizen Involvement, and to preserve, protect, and enhance the livability and economic viability of its farms, forests, and rural neighbors. It will act, if requested, as a technical resource assisting neighbors to represent themselves.

Its history mission is to educate, collect, preserve, interpret, and research its local history and to encourage public interest in the history of the Hugo area.

Volunteer membership dues are \$10.00 annually per family and normally used for paper, ink, envelopes, publications and mailings. Send us your e-mail address if you want to know what we are doing.

Email: hugo@jeffnet.org

Web Page: <http://www.hugoneighborhood.org/>

Edited by Jean Boling, Karen Rose,
Wayne McKy, & Mike Walker

HNA&HS Officers

Wayne McKy, Chair
6497 Hugo Road
Grants Pass, Oregon 97526

Mike Walker, Education Chair
3388B Merlin Rd #195
Grants Pass, Oregon 97526

Web Master

Karen Rose, Web Master
575 Red Mountain Drive
Grants Pass, Oregon 97526

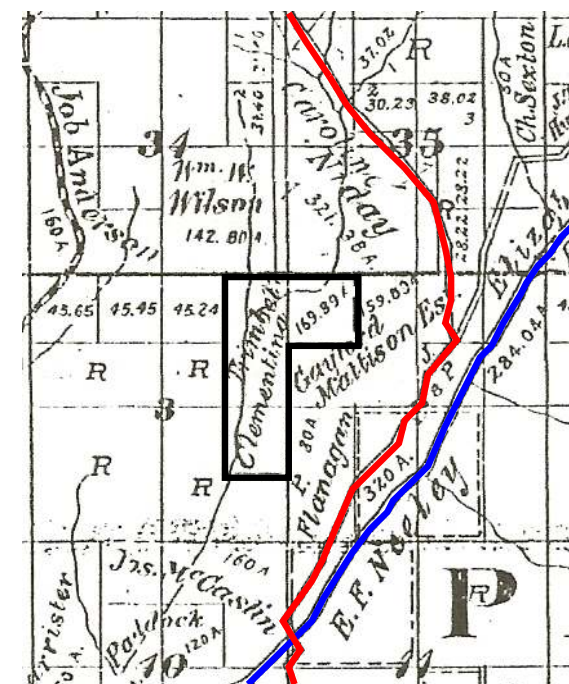
Josephine County Historical Society

Jean Boling, Historic Sites Chair
214 NW Booth Street
Grants Pass, Oregon 97526

TRIMBLE FAMILY: JOSEPHINE COUNTY FEDERAL CENSUS

Very Draft

Brochure 82 in Hugo's Pioneers Brochure Series



Trimble' Hugo Ranch: 1895

Not Quality Controlled, Nor Edited

January 14, 2008
Updated July 5, 2011

Hugo Neighborhood Association &
Historical Society
Josephine County Historical Society

Brochure 82 in Hugo's Pioneers Brochure Series

HNA&HS 2008/2011 - 82

C:\Documents and Settings\mike\My Documents\Genealogy\History_Brochures\People Pioneers
1800s\BROCHURE_82 Trimbles Census 011408.wpd